



**CLIVEPEARCE**  
Now you're moving

3 Bedrooms

Chalet Bungalow - Semi

Asking Price

£390,000

Located in

Truro



[www.clivepearceproperty.com](http://www.clivepearceproperty.com)



# Lower Redannick

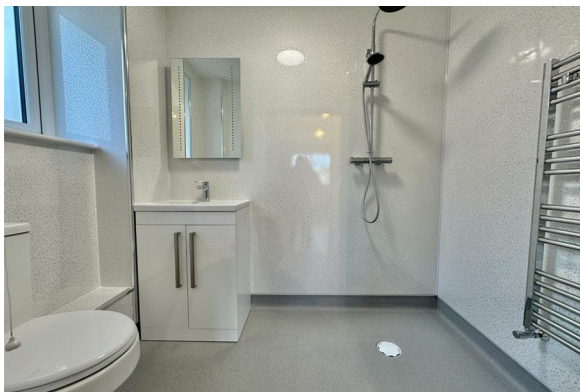
Truro | Cornwall | TR1 2JW



Newly built this three bedroom home is highly specified throughout with landscaped front and rear gardens. Stylish fitted kitchen, shower/wet rooms, floor coverings and decor. Ready to move in to!

# Lower Redannick

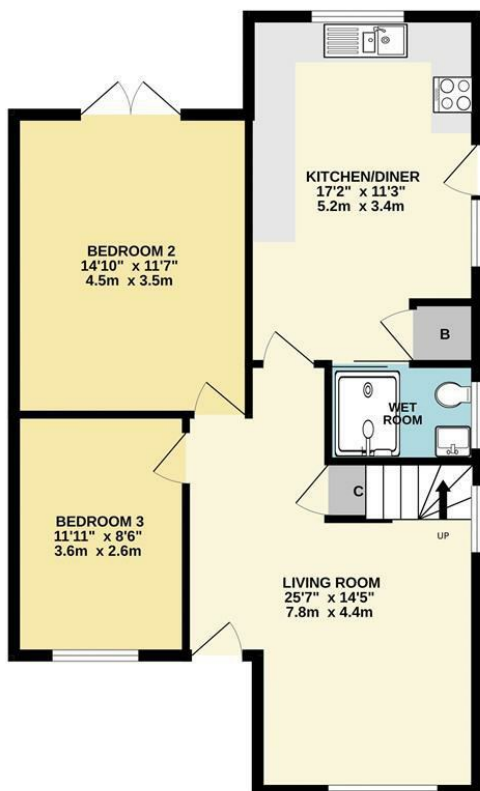
£390,000 Freehold



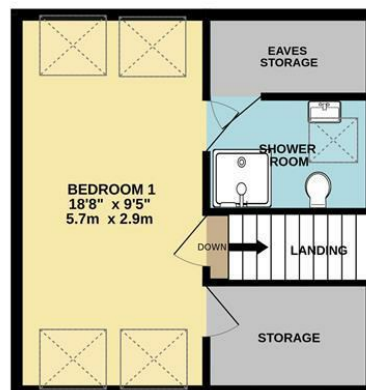
- Three bedrooms - one en-suite
- Brand new fitted kitchen
- Living room
- Double glazing
- Excellent location
- Open plan kitchen/dining room
- Superb ground floor wetroom
- Landscaped front and rear gardens
- Flexible space



GROUND FLOOR  
740 sq.ft. (68.7 sq.m.) approx.



1ST FLOOR  
327 sq.ft. (30.4 sq.m.) approx.



TOTAL FLOOR AREA : 1067 sq.ft. (99.1 sq.m.) approx.

Whilst every attempt has been made to ensure the accuracy of the floorplan contained here, measurements of doors, windows, rooms and any other items are approximate and no responsibility is taken for any error, omission or mis-statement. This plan is for illustrative purposes only and should be used as such by any prospective purchaser. The services, systems and appliances shown have not been tested and no guarantee as to their operability or efficiency can be given.  
Made with Metropix ©2025.

## Council Tax Band

## Local Authority

Agents Note: Whilst every care has been taken to prepare these particulars, they are for guidance purposes only. All measurements are approximate and are for general guidance purposes only and whilst every care has been taken to ensure their accuracy, they should not be relied upon and potential buyers/tenants are advised to recheck the measurements.

Energy Efficiency Rating		
	Current	Potential
Very energy efficient - lower running costs		
(92 plus) <b>A</b>		
(81-91) <b>B</b>		
(69-80) <b>C</b>		
(55-68) <b>D</b>		
(39-54) <b>E</b>		
(21-38) <b>F</b>		
(1-20) <b>G</b>		
Not energy efficient - higher running costs		
<b>England &amp; Wales</b>	EU Directive 2002/91/EC	

31 Lemon Street  
Truro  
Cornwall  
TR1 2LS



**CLIVEPEARCE**  
Now you're moving

hello@clivepearceproperty.com

01872 272622

www.clivepearceproperty.com